



# Commercial Clippings

FOR THE NORTHEAST FLORIDA GREEN INDUSTRY  
*Serving Clay, Duval, and Nassau County*

August/September 2011

Issue 15, Page 1

## In this Issue:

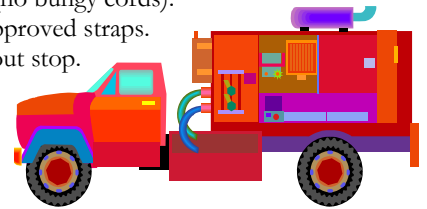
FDOT Requirements	pg 1
Upcoming Classes	pg 2/3
Featured Creature	pg 4
Do You Know?	pg 5
Meet Coco the Caribbean Crazy Ant	pg 5
Duval 4-H Horticulture Team	pg 6
New or Revised Publications	pg 7
Charity Fishing Tournament	pg 7
Contact Us	pg 8



## FDOT Vehicle in Commerce Requirements by Erin Harlow and Paul Mitola

In July, the Region 5 Florida Pest Management Association held its monthly meeting at the Duval County Extension Office. Paul Mitola with the Department of Agriculture and Consumer Services spoke about the Florida Department of Transportation requirements for vehicles in commerce. This is an important topic for anyone doing business and FDOT does not need a reason to stop you. The requirements are summarized below:

1. All loads must be secured with DOT approved straps (no bungy cords).
2. All equipment and tools must be secured with DOT approved straps.
3. All gas cans must have a spout cap or an automatic spout stop.
4. All gas cans must be secured to the vehicle.
5. All lights must be working.
6. Vehicle must not be leaking any fluids.
7. Must have 3 reflective devices cones or triangles.
8. Windows must have at least 70% transparency.
9. Must have an approved fire extinguisher and it must be mounted.
10. The vehicle must be registered for the proper tax class for the vehicle GVWR or maximum weight or it's \$0.05 per pound fine over the registered weight.
11. Gas cans must be FDOT approved and cannot be more than 8 gallons.
12. All opened bags of fertilizer must be closed and sealed to prevent spillage.
13. Vehicles over 8 feet wide must have center marker lights on rear; all lights must be working.
14. FDOT can put your vehicle "out of service" which means you cannot move it unless the condition is corrected or have the vehicle towed.
15. If you move the vehicle other than it being towed without the corrections being made the company will be fined \$2500, the driver could lose his CDL and could go to jail. Fine also depends on driver or driver/owner.
16. After corrections are made the mechanic or the owner must complete and sign the inspection report and send it to Tallahassee.
17. Water tanks should be marked "water only" or "non-potable water" and the gallon capacity.
18. You cannot have any alcoholic beverages even unopened in vehicles in commerce.
19. Any vehicles over 10,000 lbs must stop at weigh stations and must follow "no trucks in left lanes" signs.
20. Front tires must have at least 4/32" tread on front tires and 2/32" on rear tires.
21. Your license plate must be secured and unobstructed.
22. Mirrors must be in working condition.
23. Placarded vehicles require the driver to have proper license endorsements and possess a valid medical card.
24. Fertilizer spreader with fertilizer still in must have a cover on it during transportation as to not allow spillage.
25. Hoses not on a hose reel must be secured properly.
26. FDOT also checks the vehicle suspension and brakes.
27. Cans or bottles must be secured against movement.



**All Classes Require Pre-Registration** unless stated otherwise.  
To register visit us at <http://duval.ifas.ufl.edu> and click Commercial Horticulture/Training or call Becky Davidson at 904-387-8850.

*You can now pay for classes  
with a credit card on our website!*

**Limited Commercial  
Landscape  
Maintenance  
Workshop**

**August 10, 2011 (Hastings)  
September 29, 2011 (Duval)**

8:15 am - 3:00 pm - Full Day; 8:15 am – 12:00 pm - Half Day  
\$30.00 for either full or half day

6 CEUs Total: 3 CORE & 3 LCLM, 3 LL&O, 3 L&O

Lunch Included; textbooks not included

Optional LCLM or LL&O Exam at 3:00 pm

You must have all required paperwork to take the exam.

For more information about the exam or books or to register, please visit <http://duval.ifas.ufl.edu> and click on Commercial Horticulture.

**Best Management  
Practices for the  
Protection of Water  
Resources by the  
Green Industries  
(GI-BMPs)**

**August 18, 2011 (Duval)  
September 14, 2011 (St. Augustine)  
October 21, 2011 (Duval)**

8:30 am – 3:30 pm

\$25.00

4 CEUS: 2 CORE & 2 L&O, 2 LCLM, 2 LL&O, 2 O&T or 2 Pvt

**Pest Management  
University Sensitive  
Facilities Training**

**August 23, 2011**

9:00 am – 5:00 pm

\$75.00 includes training, booklet, lunch

Several sites across FL including DUVAL

5 CEUs: 2 CORE, 3 GHP, 3 LS or 5 technician training hours

To register visit [http://duval.ifas.ufl.edu/commer\\_hort\\_training.shtml](http://duval.ifas.ufl.edu/commer_hort_training.shtml)

**Certified Pest  
Control Operators of  
Florida (CPCO) Field  
Day**

**August 26, 2011**

\$30.00 per category for non-members of CPCO

\$20.00 Technician Training

At Door Registration \$10.00 additional

Call 407-217-5655 to register

Hands-on demonstrations, CEUs, Technician Training, Vendors

**All Classes Require Pre-Registration** unless stated otherwise.  
To register visit us at <http://duval.ifas.ufl.edu> and click Commercial Horticulture/Training or call Becky Davidson at 904-387-8850.

*You can now pay for classes  
with a credit card on our website!*

**ID Cardholder  
Technician Training**

**September 23, 2011**  
12:00 pm – 4:00 pm  
\$10.00  
2 or 4 hours technician training

**Introduction to  
Landscape Irrigation  
Maintenance in  
Florida**

**September 19, 2011**  
8:00 am – 5:00 pm  
Presented by the Florida Irrigation Society  
\$100.00 for Florida Irrigation Society Members  
\$135.00 for non-members  
8 General Irrigation CEUs in Volusia, Lake, Pinellas, and Dade Counties

**Technology and  
Practices for Water  
Conservation in  
Landscape Irrigation**

**September 20, 2011**  
8:00 am – Noon  
Presented by the Florida Irrigation Society  
\$50.00 for Florida Irrigation Society Members  
\$75.00 for non-members  
4 Optional CECs for Landscape Architects, 4 General Irrigation CEUs for Volusia, Dade, Pinellas, and Lake Counties

**Landscape Irrigation  
Rules and  
Regulations**

**September 20, 2011**  
1:00 pm – 5:00 pm  
Presented by the Florida Irrigation Society  
\$50.00 for Florida Irrigation Society Members  
\$75.00 for non-members  
  
2 Optional CECs and 2 Law and Rules CECs for Landscape Architects, 4 General Irrigation CEUs for Volusia and Dade; 3 General Irrigation & 1 Business CEUs for Pinellas and Lake County

**Right-of-Way  
Herbicide Training &  
Exam**

**September 30, 2011**  
8:00 am – 3:15 pm, optional exams at 3:30 pm  
\$10.00, manuals can be purchased separately  
Lunch on your own  
4.5 ROW and 2 CORE CEUs have been applied for

**Advanced  
Landscape Training**

**October 27, 2011**  
8:15 am – 11:50 pm  
\$20.00  
Includes books, materials, and snacks  
Check the website for topics and speakers  
4 L&O, 4 LCLM, 4 LL&O, 4 Pvt, and 4 O&T have been applied for

## UNFRIENDLY or FLORIDA-FRIENDLY PREDATOR? – The Cuban Brown Anole

By Raymond Zerba, Clay County Extension

Did you know that right there in nearly every landscape you maintain there is a horrific battle for supremacy (and an animal's very existence) taking place every day of the year? Well there is and it's between our "somewhat" native Green Anole (below) and an introduced lizard to our area – the Cuban Brown Anole (*Anole sagrei sagrei*) – right picture.



Unlike the Green Anole, Cuban Browns cannot turn from green to brown with environmental challenges but are able to turn from brown to black. Unlike the Green, their back often sports highly marked stripes and triangles, while Greens never show this.

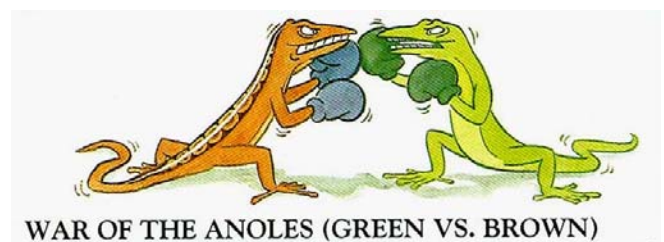


A big difference in color is in the "dewlap" (throat pouch) display. The Greens' is orange to reddish pink with no border. The Cuban Browns' is orange to red with a distinct yellow-edged border. They are slightly larger than the Green (up to 8 ½ inches verses 8), but the defining feature that is giving the Cuban Brown the upper hand in the fight for dominance, is their much higher reproductive rate.

Cuban Browns probably arrived here in nursery pots that had leaves atop their soil, which is a common place for both Greens and Cuban Browns to lay their eggs. Both will aggressively attack each other for territory and they seem evenly matched in a fight. Both will eat smaller versions of their opponent. For the last decade, this pitched battle has been taking place in Northeast Florida.

Some herpatology experts have predicted that because of the greater reproductive successes of the Cuban Brown, within the next decade, we may no longer see the Green Anole in urban landscape and only find them in more rural settings where Cuban Browns are still less common.

Thankfully both are very effective and beneficial predators to have around so we are not suggesting you try to control one over another – it's just too bad they can't live in more harmony! It's another example of where an "exotic intruder" is sadly changing the natural habit it invades. Your call – is this man influencing evolution "survival of the fittest" happening before our eyes or just another case of man "mucking around" with natural systems.

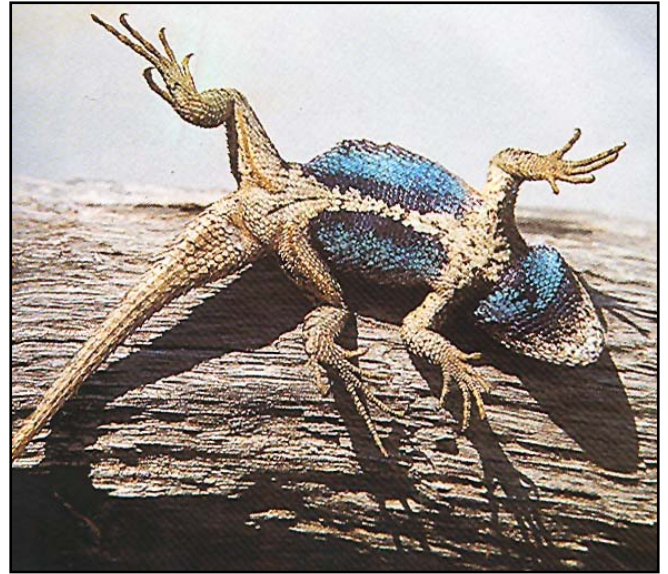


My information comes from a 2001 World Publication by Pete Carmichael and Winston Williams entitled "Florida's Fabulous Reptiles and Amphibians."

## Do you know what this is?

### OK! OK! Another lizard article – do you know what this one is?

You probably have seen these running about in the landscapes of some of your accounts. Yes it is a type of lizard but why does it have a serious case of “blue belly rash?” Why would you care? Actually people turn these in to our office every so often and when I can tell them the name of the lizard and why its belly is blue – the person is amazed I am so smart – well I’d like to think that anyway.



Actually, it’s just that I have seen them before, read about them and after you read about them in the October/November Commercial Clippings you too (if someone ever asked you why they are blue) can appear exceedingly wise when you answer or a know-it-all – guess it depends on the situation. I’ll share more info about this lizard next issue – **RZ**

## Introducing **Coco the Caribbean Crazy Ant**

### Join her on Facebook!



Coco is a Caribbean Crazy Ant that has her own facebook page where she loves to share information about herself and her family. Her facebook page says that her family moved here in the 1950s and they live from Miami to Jacksonville. She loves to travel, fine dining, and spending time with her (very large) family.

We encourage you to get to know Coco on facebook. She is not shy and loves to talk about herself and other Caribbean crazy ants. Don’t be afraid to ask her questions! In case you were wondering, this little ant hangs out a lot in Gainesville at at Dr. Faith Oi’s lab. To become a “friend” of Coco, search for her on Facebook at [www.facebook.com](http://www.facebook.com).

## The Northeast Chapter of the Florida Nursery, Growers, and Landscape Association (FNGLA) Sponsors the Duval County 4-H Horticulture Identification and Judging Team to attend the State Contest in Gainesville

A BIG thank you to the Northeast Chapter of the Florida Nursery, Growers, and Landscape Association (FNGLA) for supporting the Duval County 4-H and sponsoring this year's Duval County Horticulture Identification and Judging team to attend the state contest. The local FNGLA chapter donated \$1000.00 to send all four team members to 4-H Congress in Gainesville for the week. This is the first time any of the students have been able to attend for the week. The contest was held July 26, 2011.



Members were selected for the state team because they were high individuals at the County contest held at the Fair.



4-H members have been practicing for weeks for the state horticulture identification and judging contest held in Gainesville.

To qualify for the Duval Horticulture Team each student was an individual high winner at the County contest held at the fair. For the state contest students must identify plants in four categories including ornamentals, flowers and foliage, vegetables, and fruits and nuts. Any part of the plant or by-product may appear on the test. Students had to learn 50 plants in each category for a total of 200 plants!

Students also participate in a judging category where there are two classes for each of the four categories where the 4-H member must identify and rank the best plants, foliage, fruits, or veggies.

Because the students were able to attend 4-H Congress all week, they were able to participate in the many leadership activities. 4-H members can participate in a community service event ranging from working at the Ronald McDonald House, Dudley Farm Historic State Park, Mill Creek Retirement Home for Horses or the St. Francis House among others. Students may also attend workshops at Congress and may choose from topics that interest them including entomology, photography, equine management, and fashion. The students have worked very hard to attend the state horticulture contest and we have been meeting several times a month for the last several months. To find out how the students did, please visit our website at [http://duval.ifas.ufl.edu/commercial\\_horticulture.shtml](http://duval.ifas.ufl.edu/commercial_horticulture.shtml) or wait until the October/November Commercial Clippings.

## New or Revised Publications

- Zoysiagrass for Florida Lawns
- Soil pH and the Home Landscape or Garden, revised
- IRAC's Insecticide Mode of Action Classification
- Pesticide Effects on Nontarget Organisms
- Giant Whip Scorpion *Mastigoproctus giganteus giganteus*
- Terrestrial Slugs of Florida
- Nickel Nutrition in Plants
- Boron Deficiency in Palms
- Considerations for Developing Effective Herbicide Prescriptions for Forest Vegetation Management
- Production and Marketing Practices in the Florida Nursery Industry, 2008
- Redbay Ambrosia Beetle
- Pruning Palms
- Biology and Control of Common Ragweed along Ditch and Canal Banks
- Saw Palmetto Control: Individual Plant and Broadcast Application



Giant Whip Scorpion

To access these and all UF's publications visit <http://edis.ifas.ufl.edu/> or call the Duval County Extension Office to request a hard copy.



"Mouse ears" on pecan due to nickel deficiency. This will also occur in ornamental plants. Read the article to learn more.

## Florida Irrigation Society Charity Fishing Tournament

October 15, 2011

Charities: Guy Harvey Ocean Foundation and the Wolfson Children's Hospital

Entry Fee: \$100.00, Late Registration Fee after 9-30-11 is \$125.00

Register online at [www.creekwars.com](http://www.creekwars.com) or mail registration fee to:  
Florida Irrigation Society Northeast Florida Chapter, P.O. Box 57581, Jacksonville, FL 32241

For more information contact Kirk Wurster at 904-483-6212 or [blandscape77@gmail.com](mailto:blandscape77@gmail.com) or Richard Christmas at 904-759-0364 or [Richard.christmans@northfloridairrigation.com](mailto:Richard.christmans@northfloridairrigation.com)



Duval County Extension  
1010 N. McDuff Avenue  
Jacksonville, FL 32254  
(904) 387-8850  
Fax: (904)387-8902  
Website: <http://duval.ifas.ufl.edu>

Non-Profit Org.  
U.S. Postage Paid  
Jacksonville, FL  
Permit No. 1482

ADDRESS SERVICE REQUESTED



## Local EXTENSION Offices

Ray Zerba  
Clay County  
2463 SR 16 West  
Green Cove Springs, FL 32043  
(904) 284-6355  
[http://clay.ifas.ufl.edu/  
rzerba@ufl.edu](http://clay.ifas.ufl.edu/rzerba@ufl.edu)

Erin Harlow  
Duval County  
1010 N. McDuff Avenue  
Jacksonville FL 32254  
(904) 387-8850  
FAX 387-8902  
[http://duval.ifas.ufl.edu/  
erine@coj.net](http://duval.ifas.ufl.edu/erine@coj.net)

Rebecca Jordi  
Nassau County  
543350 US Highway 1  
Callahan, FL 32011-6486  
(904) 491-7340  
[http://nassau.ifas.ufl.edu/  
rjordi@ufl.edu](http://nassau.ifas.ufl.edu/rjordi@ufl.edu)



For individuals requiring special accommodations, please contact our office (904/387-8850) within a minimum of 5 working days of the program. For persons with hearing or speech impairments, when contacting our office, please use the Florida Relay Service at 1-800-955-8771 (TDD). Your comments and input are necessary for this to be a useful tool for all of us.

Extension Programs are open to all regardless of race, creed, color, sex, sexual orientation, marital status, age, disability, religion, national origin, political opinions or affiliations.